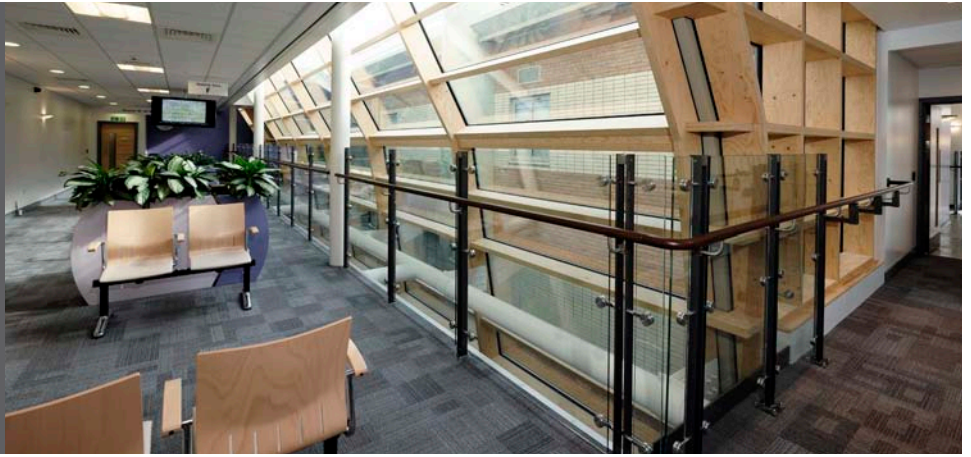




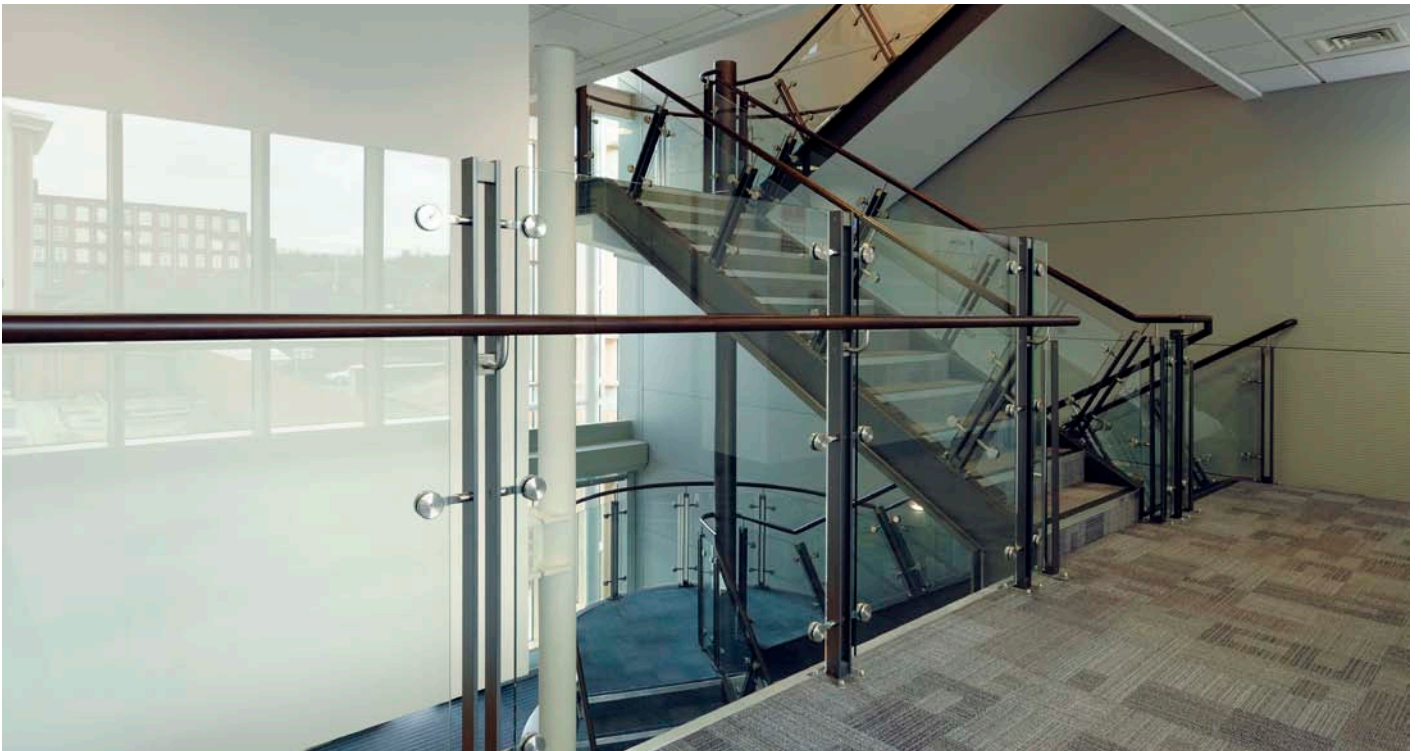
Delta Balustrades

EXPERTISE YOU CAN LEAN ON



DELTA BALUSTRADES CASE STUDIES • DELTA BALUSTRADES CASE STUDIES • DELTA BALUSTRADES CASE

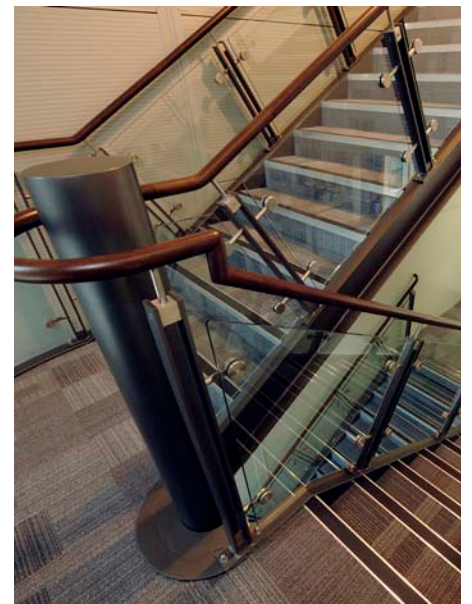
Royton Health & Wellbeing Centre, Oldham



Designed by Blue Sky Architects to replace an outdated medical centre and bring a number of health and wellbeing services together in a single building, Royton Health & Wellbeing Centre provides a one-stop facility for around 200,000 patients. Services in the building include two GP practices, a pharmacy, community nursing teams, a dental surgery and specialist services including orthoptics, podiatry, audiology and minor surgery.

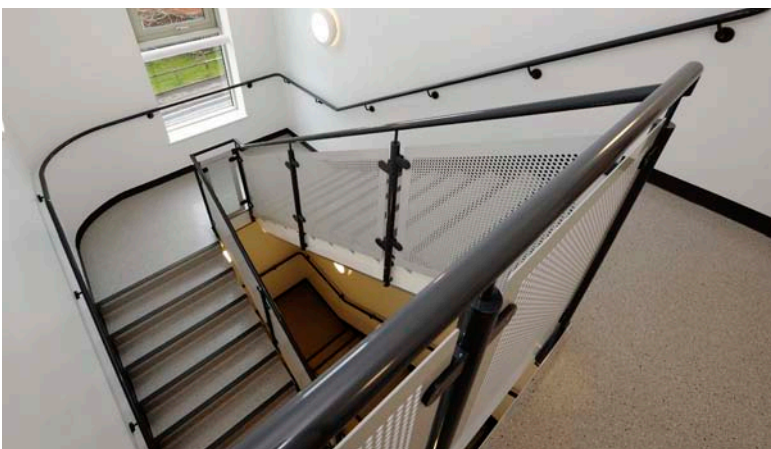
Constructed by Mansell at a cost of £9 million, the NHS LIFT (Local

Improvement Finance Trust) project comprises a three-storey building with a main steel staircase that was designed, supplied and installed by Delta Balustrades, enabling seamless design co-ordination of the staircase and handrails. The rear stairs feature Orbis balustrades and perforated panels with HiBuild powder coating. In the main patient areas Delta Balustrades' Duo system was installed with hardwood effect handrails, adding a traditional feel to the interior.





ROYTON HEALTH & WELLBEING CENTRE, OLDHAM • ROYTON HEALTH & WELLBEING CENTRE, OLDHAM



KEY SPECIFICATIONS

Main Stairs and Voids:

Range: DUO

Handrail: 50 Series DelamereX hardwood effect coated

Balustrade: HiBuild coated Duo balustrade

Infill: 10mm clear glass infill panels with Banjo glass fixings

Rear Stairs:

Range: ORBIS

Handrail: 50 Series HiBuild coated

Balustrade: 50 series HiBuild coated Orbis balustrade

Infill: HiBuild coated perforated steel panels

Client: **Oldham NHS**
Contractor: **Mansell Construction**
Architect: **Blue Sky Architects**

Delta Balustrades, Millbuck Way,
Sandbach, Cheshire CW11 3JA

Tel: 01270 753 383
info@deltabalustrades.com
www.deltabalustrades.com