

Practical and aesthetically pleasing tubular balustrade system particularly suited to staircases.

#### Key Benefits

- Pre-manufactured to speed up installation.
- No hot works on site.
- Low maintenance.

#### Accreditations



Orbis is our most popular system, utilised in many varied applications due to its flexibility and is very quick to install. The horizontal midrail infills are most commonly used in commercial, higher education, and other buildings which cannot be accessed by children under the age of 5.

| FINISH TYPE                   | PRODUCT  | INTERNAL | EXTERNAL | MARINE* |
|-------------------------------|----------|----------|----------|---------|
| Satin polish stainless steel  | Sigma    | ✓        |          |         |
|                               | Ultra    |          | ✓        |         |
| Bright polish stainless steel | Lustre   | ✓        | ✓        | ✓       |
| PPC solid colour              | HiBuild  | ✓        |          |         |
|                               | HiBex    |          | ✓        |         |
| PPC metallic colour           | HiMet    | ✓        |          |         |
|                               | HiMex    |          | ✓        |         |
| Hardwood (Handrails only)     | Delamere | ✓        |          |         |

\*Suitable for swimming pools.

#### Options

##### Fixing

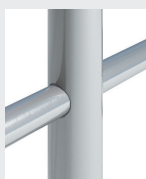
- SF1 - 2 Point Side Fix
- TF1 - Top Fix (with circular cover rose)
- TF2 - Grout Fix (with circular cover rose)
- TF4 - Offset Top Fix

##### Infill Options

- 16mm dia Inline Midrails
  - 2 Midrails
  - 3 Midrails
  - 4 Midrails
  - 5 Midrails
  - 6 Midrails
  - 7 Midrails



- 22mm dia Inline Midrails
  - 1 Midrail
  - 2 Midrails



##### Loadings

- 0.74kN

##### Handrail & bracket type\*



• BB6 - Inline handrail



• BB3 - Offset handrail with radius bracket

\*All available with or without lighting.



## Technical Information

| DIMENSIONS  |   |  |  |   |  |   |
|---|---|--|--|---|--|---|
| Height Guidance   | Baluster Size   | Handrail Size  | Infill Size  | To suit stair angle   | Well Width   | Fixing Position   |
| <ul style="list-style-type: none"> <li>900-1000mm Stairs</li> <li>1100mm min on landings/voids</li> </ul> | <ul style="list-style-type: none"> <li>50 Series 48mm - 0.74kN loading</li> </ul> | <ul style="list-style-type: none"> <li>40 Series 42mm tubular</li> <li>50 Series 48mm tubular</li> </ul> | <ul style="list-style-type: none"> <li>16mm dia (for 2 + midrails)</li> <li>22mm dia (for 1-2 midrails)</li> </ul> | <ul style="list-style-type: none"> <li>26 - 36 degrees</li> </ul> | <ul style="list-style-type: none"> <li>No minimum for top fix</li> <li>Typically 300mm minimum for side fix (If the 'well' is less than 300, please contact Delta to discuss options)</li> </ul> | <ul style="list-style-type: none"> <li>Top fix (TF1) 100mm from face of stair/slab to centreline of balustrade</li> <li>Offset Top fix (TF4) 80mm from face of stair/slab to centreline of balustrade</li> <li>Side fix (SF1) 40mm from face of stair/slab to centreline of balustrade</li> </ul> |

## Cost Indication

