

**Duo is based on the powerful impact of twin flat balusters, created to give an unforgettable first impression.**

**Key Benefits**

- Pre-manufactured to speed up installation.
- No hot works on site.
- Precision engineered for superior quality.

CE Marked



**The Duo system is a precision engineered weld free balustrade that achieves a high quality consistent detail. Perforated panel infills offer a solid solution where glass is not suitable.**

**Options**

**Fixing**

- SF5 - Standard Side Fixing
- TF7 - Standard Top Fixing with cover rose
- TF8 - Standard Top Fixing without cover rose (visible dome nut fixings)

**Infill Options**

- Mild Steel Powder Coated (for internal applications)
- Aluminium Powder Coated (for internal applications)

**Loadings**

- 0.74kN

FINISH TYPE	PRODUCT	INTERNAL	EXTERNAL	MARINE*
Satin polish stainless steel	Sigma	✓		
	Ultra		✓	
Bright polish stainless steel	Lustre	✓	✓	✓
PPC solid colour	HiBuild	✓		
	HiBex		✓	
PPC metallic colour	HiMet	✓		
	HiMex		✓	
Hardwood (Handrails only)	Delamere	✓		

\*Suitable for swimming pools.

**Handrail & bracket type\***



· BB6 - Inline Handrail



· BB3 - Offset Handrail (single or double) with radius bracket



· BB5 - Offset Handrail (single or double) with barrel bracket

**Panel Clamps**



· L4 - Banjo Lug



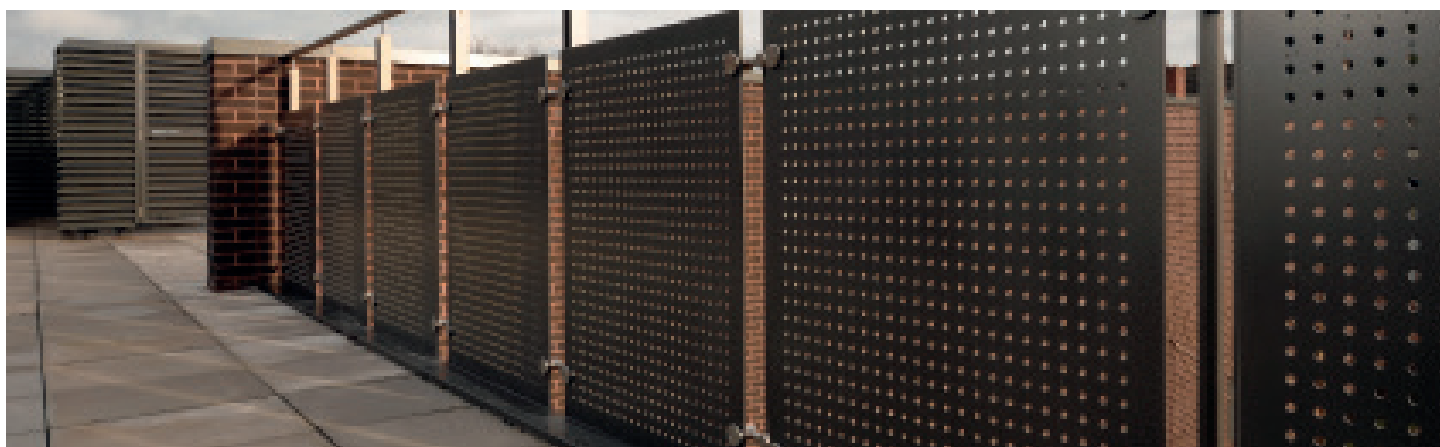
· L5 - Offset Barrel Lug



· L6 - Inline Barrel Lug

### Applications

For internal and external applications in healthcare, residential, education, transport, commercial, community & public, hotels, leisure and retail.



## Technical Information

DIMENSIONS						
Height Guidance	Baluster Size	Handrail Size	Infill Size	To suit stair angle	Well Width	Fixing Position
<ul style="list-style-type: none"> <li>900-1000mm stairs</li> <li>1100mm min on landings/voids</li> <li>Infill/balustrade can continue above 1100mm</li> </ul>	<ul style="list-style-type: none"> <li>50 x 10mm Twin Flat Balusters with 40x40mm spacing blocks</li> <li>-0.74kN loading</li> </ul>	<ul style="list-style-type: none"> <li>40 Series 42mm tubular</li> <li>50 Series 48mm tubular</li> </ul>	<ul style="list-style-type: none"> <li>3mm thickness (Mild Steel)</li> <li>4mm thickness (Aluminium)</li> <li>60mm margin, 12mm dia holes at 20mm pitch (applicable for both thicknesses of panel)</li> </ul>	<ul style="list-style-type: none"> <li>26 - 36 degrees</li> </ul>	<ul style="list-style-type: none"> <li>No minimum for top fix.</li> <li>Typically 300mm minimum for side fix</li> <li>(If the 'well' is less, please contact Delta to discuss options)</li> </ul>	<ul style="list-style-type: none"> <li>Top fix (TF7/TF8) 100mm from face of stair/slab to centreline of balustrade</li> <li>Side fix (SF5) 45mm from face of stair/slab to centreline of balustrade</li> </ul>

## Cost Indication

