

**Achieve a minimalist appearance with a single flat post system. Available in a range of materials and colours that complement any environment.**

**Key Benefits**

- Pre-manufactured to speed up installation.
- Creates high value spaces.
- No hot works on site.
- 100% bolt-through glass lugs eliminating glass slippage.

CE Marked



**Mono is best known as a robust solution capable of withstanding high loading, whilst providing a modern unobtrusive style. For these reasons, it is often used for terraces, atriums and areas where extra guarding height is required. Also can be applied to feature staircases in these environments to create a consistent contemporary feel.**

FINISH TYPE	PRODUCT	INTERNAL	EXTERNAL	MARINE*
Satin polish stainless steel	Sigma	✓		
	Ultra		✓	
Bright polish stainless steel	Lustre	✓	✓	✓
PPC solid colour	HiBuild	✓		
	HiBex		✓	
PPC metallic colour	HiMet	✓		
	HiMex		✓	
Hardwood (Handrails only)	Delamere	✓		

\*Suitable for swimming pools.

**Options**

**Fixing**

- SF4 - Standard Side Fixing (Welded)
- SF9 - Offset (L-Shaped) Side Fixing
- TF5 - Standard Top Fixing with cover rose
- TF9 - Standard Top Fixing without cover rose (visible dome nut fixings)

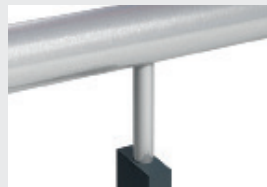
**Glass Options**

- Toughened Glass
- Laminated Glass (recommended)
- Heat Soaked Glass
- Etched Glass (sandblasted)
- Screen Printed Glass
- Coloured Glass

**Loadings**

- 0.74kN
- 1.5kN
- 3.0kN

**Handrail & bracket type\***



• BB6 - Inline Handrail



• BB3 - Offset Handrail (single or double) with radius bracket



• BB4 - Offset Handrail (single or double) with slimline barrel bracket

**Panel Clamps**



• L4 - Banjo Lug



• L5 - Inline Barrel Lug



### Applications

For internal, external & marine applications in healthcare, residential, education, transport, commercial, community & public, hotels, leisure and retail.

**db**  
Delta Balustrades  
EXPERTISE YOU CAN LEAN ON



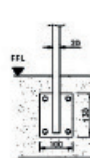
## Technical Information

DIMENSIONS						
Height Guidance	Baluster Size	Handrail Size	Infill Size	To suit stair angle	Well Width	Fixing Position
<ul style="list-style-type: none"> <li>900-1000mm stairs</li> <li>1100mm min on landings/voids</li> <li>Infill or balustrade can continue above 1100mm</li> </ul>	<ul style="list-style-type: none"> <li>50 x 20mm 0.74kN loading.</li> <li>70 x 20mm 1.5kN loading</li> <li>80 x 25mm 3.0kN loading</li> <li>90 x 20mm 3.0kN loading</li> </ul>	<ul style="list-style-type: none"> <li>40 Series 42m tubular</li> <li>50 Series 48m tubular</li> <li>60 Series 60m tubular (not compliant for stairs and ramps)</li> </ul>	<ul style="list-style-type: none"> <li>Toughened 10mm</li> <li>Laminated 11.5mm</li> </ul>	<ul style="list-style-type: none"> <li>26 - 36 degrees</li> </ul>	<ul style="list-style-type: none"> <li>No minimum for top fix</li> <li>Typically 300mm minimum for side fix</li> <li>(If the 'well' is less, please contact Delta to discuss options)</li> </ul>	<ul style="list-style-type: none"> <li>Top fix (TF5/TF9) 100mm from face of stair/slab to centreline of balustrade</li> <li>Side fix (SF4) 35mm from face of stair/slab to centreline of balustrade</li> <li>Side fix (SF9) Distance from face of stair/slab to centreline of balustrade can be specified to suit requirement dependant on loading and location. (Please contact Delta to discuss)</li> </ul>

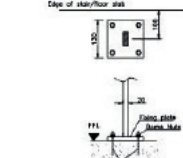
## Cost Indication



SF4



SF9



TF9