

Achieve a minimalist appearance with a single flat post system. Available in a range of materials and colours that complement any environment.

Key Benefits

- Pre-manufactured to speed up installation.
- No hot works on site.
- Low Maintenance.

CE Marked



Mono is best known as a robust solution, whilst providing a modern unobtrusive style. Perforated panel infills offer a solid solution where glass is not suitable.

Options

Fixing

- SF4 - Standard Side Fixing (Welded)
- SF9 - Offset (L-Shaped) Side Fixing
- TF5 - Standard Top Fixing with cover rose
- TF9 - Standard Top Fixing without cover rose (visible dome nut fixings)

Infill Options

- Mild Steel Powder Coated (for internal applications)
- Aluminium Powder Coated (for external applications)

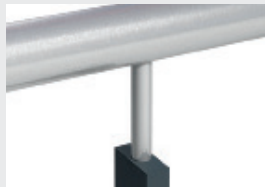
Loadings

- 0.74kN
- 1.5kN
- 3.0kN

FINISH TYPE	PRODUCT	INTERNAL	EXTERNAL	MARINE*
Satin polish stainless steel	Sigma	✓		
	Ultra		✓	
Bright polish stainless steel	Lustre	✓	✓	✓
PPC solid colour	HiBuild	✓		
	HiBex		✓	
PPC metallic colour	HiMet	✓		
	HiMex		✓	
Hardwood (Handrails only)	Delamere	✓		

*Suitable for swimming pools.

Handrail & bracket type*



• BB6 - Inline Handrail



• BB3 - Offset Handrail (single or double) with radius bracket

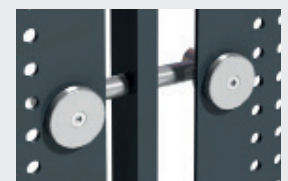


• BB4 - Offset Handrail (single or double) with slimline barrel bracket

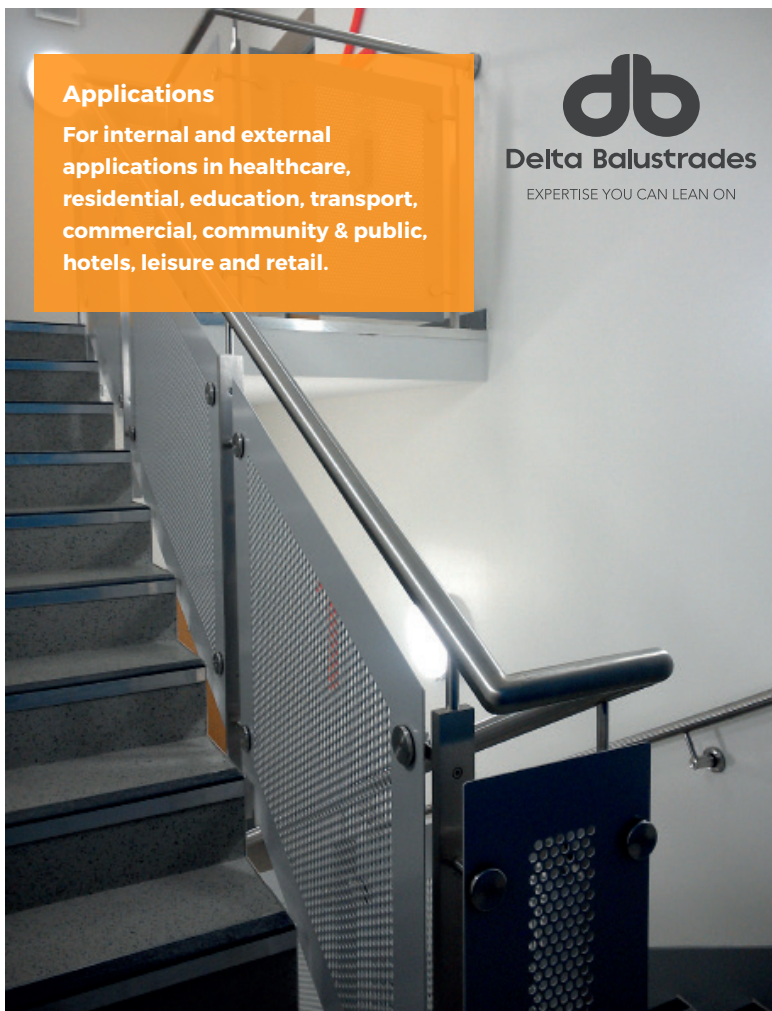
Panel Clamps



• L4 - Banjo Lug



• L5 - Barrel Lug



Applications

For internal and external applications in healthcare, residential, education, transport, commercial, community & public, hotels, leisure and retail.



Delta Balustrades

EXPERTISE YOU CAN LEAN ON

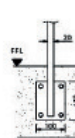
Technical Information

DIMENSIONS						
Height Guidance	Baluster Size	Handrail Size	Infill Size	To suit stair angle	Well Width	Fixing Position
<ul style="list-style-type: none"> 900-1000mm stairs 1100mm min on landings/voids Infill/balustrade can continue above 1100mm 	<ul style="list-style-type: none"> 50 x 20mm 0.74kN loading 	<ul style="list-style-type: none"> 40 Series 42mm tubular 50 Series 48mm tubular 	<ul style="list-style-type: none"> 3mm thickness (Mild Steel)- 4mm thickness (Aluminium) 60mm margin, 12mm dia holes at 20mm pitch (applicable for both thicknesses of panel) 	<ul style="list-style-type: none"> 26 - 36 degrees 	<ul style="list-style-type: none"> No minimum for top fix Typically 300mm minimum for side fix (If the 'well' is less, please contact Delta to discuss options) 	<ul style="list-style-type: none"> Top fix (TF5/TF9) 100mm from face of stair/slab to centreline of balustrade Side fix (SF4) 35mm from face of stair/slab to centreline of balustrade Side fix (SF9) Distance from face of stair/slab to centreline of balustrade can be specified to suit requirement dependant on loading and location. (Please contact Delta to discuss)

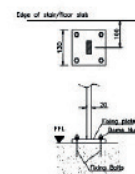
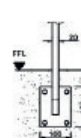
Cost Indication



SF4



SF9



TF9