

Sophisticated, minimalist design with uninterrupted lines of vision and unimpeded views.

**Key Benefits**

- Pre-manufactured to speed up installation.
- No hot works on site.
- Precision engineered for superior quality.

CE Marked



Vista incorporates elegant and freestanding frameless glass panels with no intermediate supports enhancing ambient light internally and externally.

Complement contemporary buildings, with robust performance and modest profile.

**Options**

**Fixing**

- Side fix

**Infill Options**

- Toughened Glass
- Laminated Glass (recommended)
- Heat Soaked Glass
- Etched Glass (sandblasted)
- Screen Printed Glass
- Coloured Glass
- Extended Glass (above the handrail)

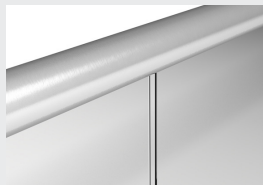
**Loadings**

- 0.74kN (SMART)
- 0.74kN & 1.5kN (PRIME)
- 1.5kN & 3.0kN (MAX)

FINISH TYPE	PRODUCT	INTERNAL	EXTERNAL	MARINE*
Satin polish stainless steel	Sigma	✓		
	Ultra		✓	
Bright polish stainless steel	Lustre	✓	✓	✓
PPC solid colour	HiBuild	✓		
	HiBex		✓	
PPC metallic colour	HiMet	✓		
	HiMex		✓	
Hardwood (Handrails only)	Delamere	✓		

\*Suitable for swimming pools.

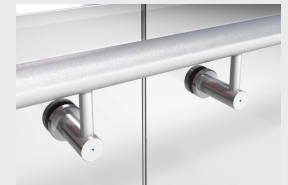
**Handrail & bracket type\***



• BB6 - Slotted Handrail



• BB3 - Offset Radius Bracket (single or double)



• BB5 - Offset Barrel Bracket (single or double)



• Small Top Capping

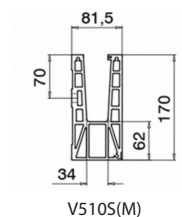
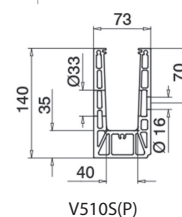
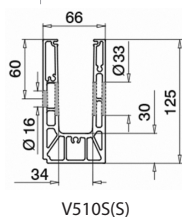
**Applications**  
For internal, external & marine applications in healthcare, residential, education, transport, commercial, community & public, hotels, leisure and retail.



### Technical Information

#### DIMENSIONS

Ref	Height Guidance	Rubber Set	Handrail Size	Infill Size	To suit stair angle	Well Width	Fixing Position
V510S(S)	<ul style="list-style-type: none"> <li>900-1000mm stairs</li> <li>1100mm min on landings/voids</li> </ul>	• Fixed	<ul style="list-style-type: none"> <li>40 Series 42mm tubular</li> <li>50 Series 48mm tubular</li> </ul>	<ul style="list-style-type: none"> <li>17.5mm</li> <li>21.5mm</li> </ul>	• 29 - 36 degrees	<ul style="list-style-type: none"> <li>Typically 300mm minimum for side fix</li> <li>If 'well' is less, please contact Delta</li> </ul>	• Side fix 45mm from face of stairs/slab to centreline of balustrade
V510S(P)	<ul style="list-style-type: none"> <li>900-1000mm stairs</li> <li>1100mm min on landings/voids</li> </ul>	• Adjustable	<ul style="list-style-type: none"> <li>40 Series 42mm tubular</li> <li>50 Series 48mm tubular</li> </ul>	<ul style="list-style-type: none"> <li>21.5mm</li> <li>25.5mm</li> </ul>	• 29 - 36 degrees	<ul style="list-style-type: none"> <li>Typically 300mm minimum for side fix</li> <li>If 'well' is less, please contact Delta</li> </ul>	• Side fix 45mm from face of stairs/slab to centreline of balustrade
V510S(M)	<ul style="list-style-type: none"> <li>900-1000mm stairs</li> <li>1100mm min on landings/voids</li> </ul>	• Adjustable	<ul style="list-style-type: none"> <li>40 Series 42mm tubular</li> <li>50 Series 48mm tubular</li> </ul>	<ul style="list-style-type: none"> <li>21.5mm</li> <li>25.5mm</li> <li>31.5mm</li> </ul>	• 29 - 36 degrees	<ul style="list-style-type: none"> <li>Typically 300mm minimum for side fix</li> <li>If 'well' is less, please contact Delta</li> </ul>	• Side fix 45mm from face of stairs/slab to centreline of balustrade



### Cost Indication

